

MILITARY, SPECIAL OPERATIONS,
PUBLIC SECURITY, ANTITERRORISM



A NEW LEVEL OF SITUATIONAL AWARENESS

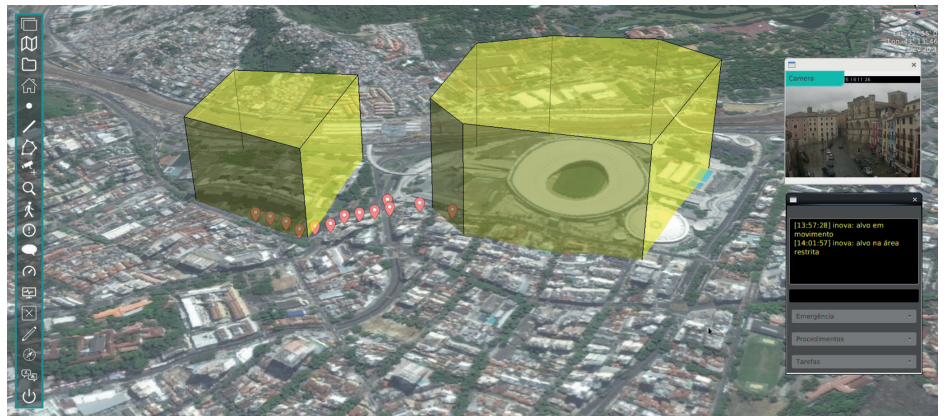
Atech, a Brazilian Strategic Defense Company, developed the Arkhe BMS, employing the latest concepts of integration, scalability as well as data analysis.

Tactical action requires a high level of coordination among all those involved in the execution. An efficient Command and Control system must provide secure and real time monitoring capability.

Based on these premises, Atech developed Arkhe BMS (Battlefield Management System), a Tactical Command and Control system. It provides to commanders, combatants or public security agents, a complete solution, integrating sensors, maps, mission data and tracking functionalities in a single platform.

Arkhe BMS presents on a single map all the information generated during a mission, providing a precise and complete tactical view of the existing scenario. It also provides an integrated operational view for Commanders and mission participants.

The system uses each involved node in the operation, as a sensor, providing videos, images, coordinates and information, improving the level of situational awareness and decision making.



EFFICIENCY IN COMMAND AND CONTROL BRINING SUCCESS TO YOUR MISSION

Arkhe BMS is based on three important strands that work to achieve efficiency and success on tactical missions: people, processes and technology.

The persons represent the different operational nodes, distributed from the action planning and control levels until the action execution agents, employing the system either in central command posts, advanced command posts, vehicles or through mobile devices .

Arkhe BMS consolidates the processes related to tactical action management, supporting a higher accuracy of the execution and control. The employed technology results from the integration of implemented sensors, systems and resources, which in a joint action, deliver an improvement of the mission situational awareness.